

EVOLV 35

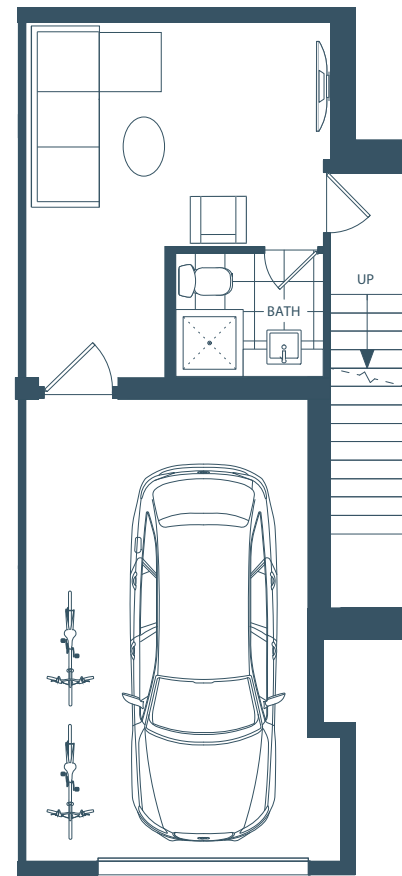
H,H1

STANDARD

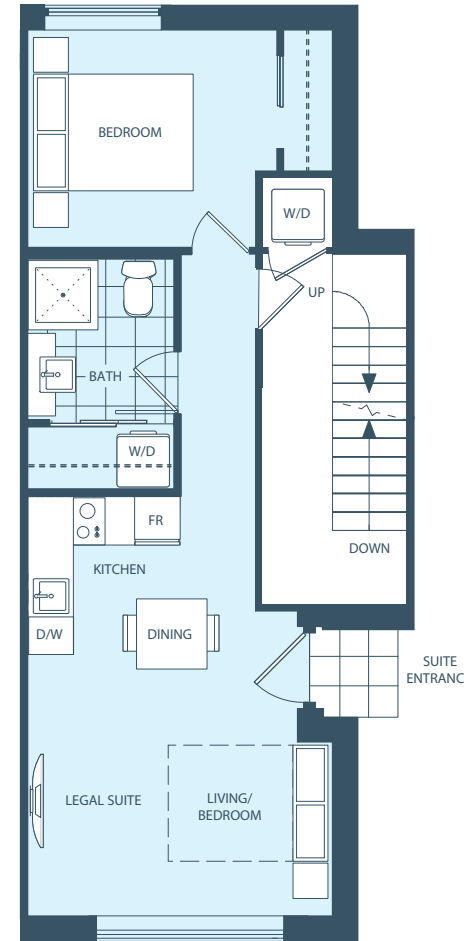
4 BED, 4 BATH
1,785 - 1,810 sq.ft.

LEGAL SUITE OPTION
STUDIO 278 sq.ft.

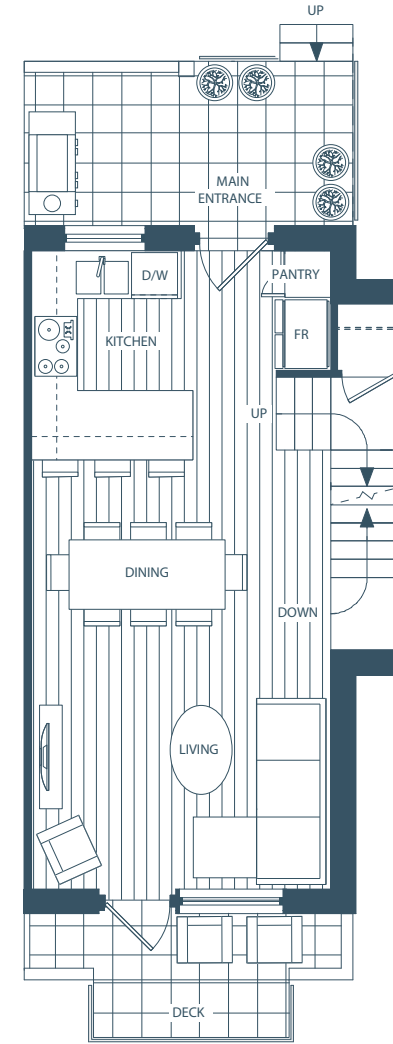
Or
1 BEDROOM
594 sq.ft.



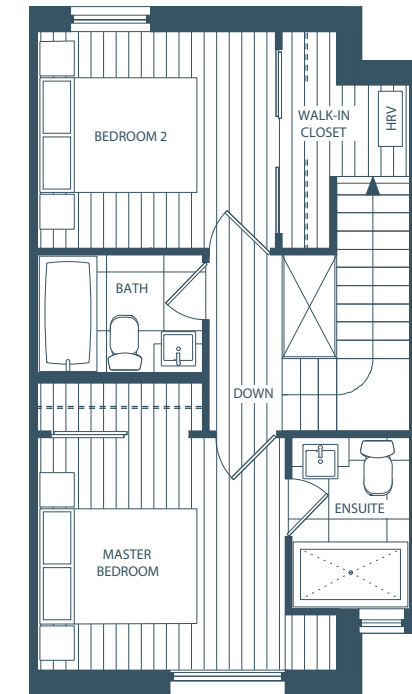
GARAGE



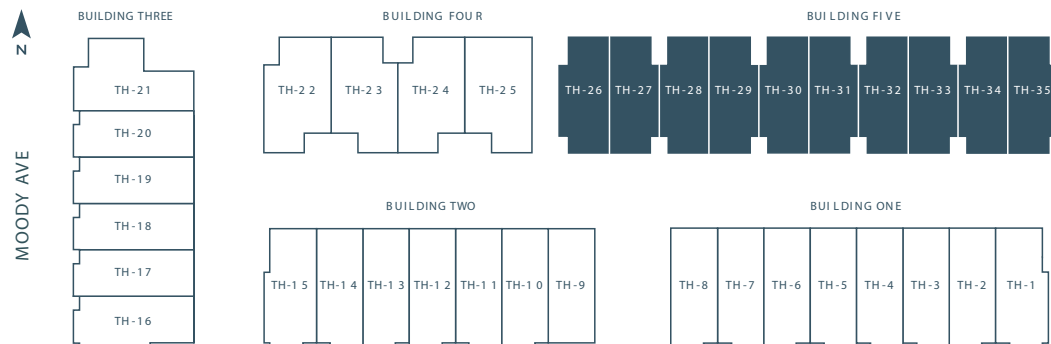
LEGAL SUITE
1 BEDROOM / STUDIO



MAIN FLOOR



BEDROOM FLOOR



This 4-bedroom laneway townhome features 2 bedrooms up, with a private master ensuite and plenty of outdoor space. The open living, dining and kitchen space is brightened by expansive doors to patios off both the kitchen and the living room. A traditional u-shaped kitchen offers ample workspace and our signature floating staircase makes a modern statement. The 4th bedroom can also be used to create a 1-bedroom legal suite or keep it to yourself. A convenient mudroom and rec room on the lower level provides extra flexibility for all your family's needs. One car private garage provides added space for sports gear and storage.

Developer reserves the right to make changes to the floorplans and specifications without notice. Actual homes may be a mirror image of the floorplan shown or have minor variations from the plan illustrated above. All interior square footage take from initial survey. E.&O. E.

evolvedliving.ca